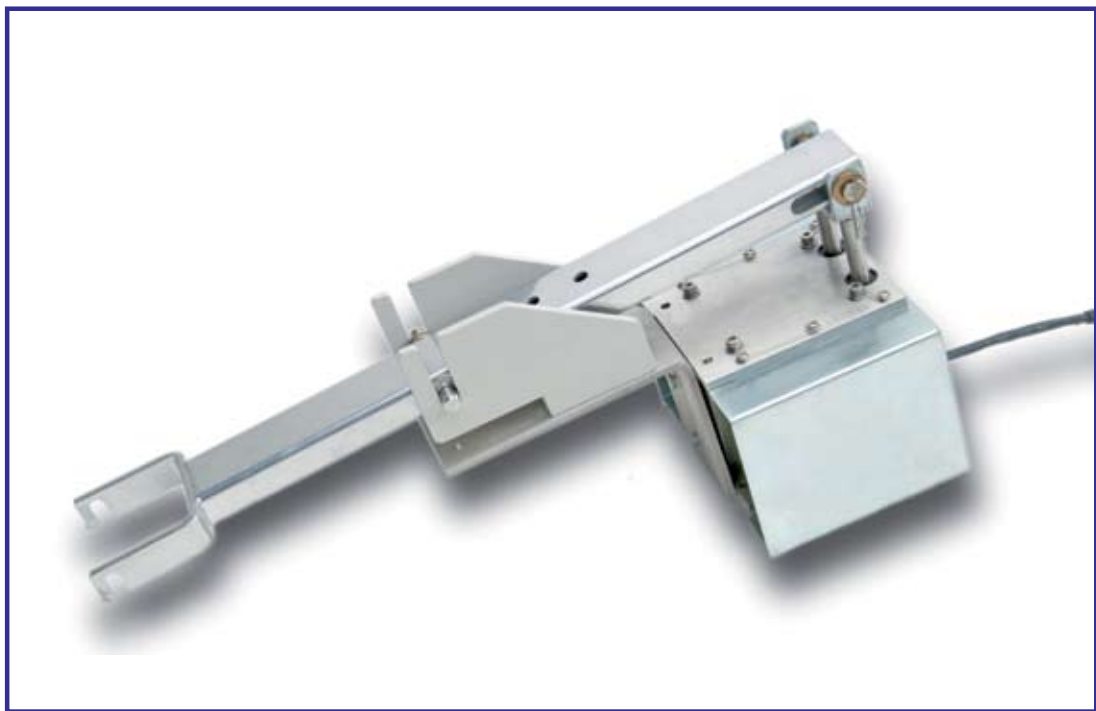


PRECIMETER

~Casting Evolution~

PXP-2LP Pin Position Actuator



The implementation of Precimeter Technology provides many advantages

- Quality improvements
- Increased productivity
- Documentation of the process
- Raw material savings
- Energy savings
- Better use of manpower

PXP-2LP Pin Position Actuator



Vertical drop control with PXP-2LP pin positioner. The Precimeter pin position actuator PXP-2LP connected to the ProH and the MLC-M1 control panel forms a system which very precisely controls the molten metal level, for example in a tundish.

The Pin Position Actuator PXP-2LP is primarily used to control the flow of molten metal through a pin-plug valve in for instance ingot casting. The PXP-2LP actuator offers a lower height profile over the through or launder than the PXP-2(E). This means that it can be used in areas where space above the through or launder is restricted. This actuator can easily be adapted to fit any through configuration.

Technical Specifications

Stroke:	6-50.4 mm (0.25"-2.0")
Plug pin load range:	Up to 35 N (8 lbs)
Positioning:	Stepper motor
Power requirement:	24 VDC (18-32 VDC) / 1.2 A
Interface:	4-20 mA (optional 0-10 VDC or 0-20 mA)
Analog input:	4-20 mA, resolution 16 bit
Digital inputs:	Analog enable / Move pin according to 4-20 mA. Calibrate to closed or open position.
Analog outputs:	4-20 mA feed back signal.
Digital output:	Temperature alarm 65°C (150°F)

PXP-2LP includes a 10 pin industrial heavy duty connector.

Contact Precimeter Group

EASTERN AND CENTRAL EUROPE DIE CASTING AND EM PUMPS

Carli Precimeter GmbH
Kirberg 5/ D-51674 Wiehl/ DE
Phone: +49-2262-701624 Fax: +49-2262-701625

WESTERN EUROPE, MIDDLE EAST, AFRICA, ASIA AND AUSTRALIA

Precimeter Control AB
Östra Hamnen 7/ SE-475 42 Hönö/ SE
Phone: +46-31-764 55 20 Fax: +46-31-764 55 29
www.precimeter.com
info@precimeter.com

NORTH, CENTRAL AND SOUTH AMERICA

Sentech Precimeter Inc.
2215 S. 48th Str. #C / Tempe, AZ 85282/ U.S.A
Phone: +1 (480) 829-1923 Fax: +1 (480) 894-5546

Local Precimeter Contact